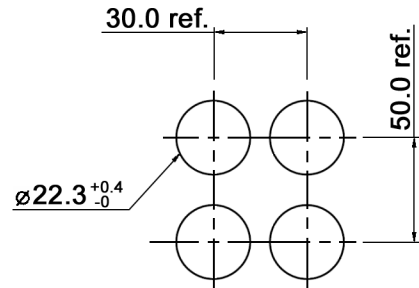


(\*) 27.5 for 3 contact blocks; 45.8 for 5 contact blocks

(\*\*) 18.2 for 3 contact blocks; 36.4 for 5 contact blocks

PANEL CUT-OUT



xx	Contacts	x	Actuator color
10	1 NO	W	white
01	1 NC	R	red
11	1 NC, 1 NO	O	orange
20	2 NO	Y	yellow
21	2 NO, 1 NC	G	green
etc.	etc.	B	blue
until	until		
41	4 NO, 1 NC		
14	1 NO, 4 NC		

NOTE:  
FOR MOMENTARY SWITCHES, THE TOTAL OF NO AND NC IS LIMITED TO 5 MAX.  
FOR LATCHING SWITCHES, THE TOTAL OF NO AND NC IS LIMITED TO 4 MAX.

Compliance: RohS III (2015/863/EU)

Tolerances: 0-1: ±0.1mm 1-4: ±0.3mm 4-16: ±0.5mm 16-63: ±0.8mm	Date	Name	<b>ICE22RP2x-xx30-Lxxx</b>
	04/18	dr	
			<b>Pushbutton, Latching, Round, Recessed</b>
			<b>30 40 48</b>
Panel design	10/23	dr	Page
Modifications	Date	Name	1/2

**knitter-switch**

Page

1/2

**Specifications:**

Utilization category: AC-15; A600; 3 A at 240 V; 1.9 A at 380 V  
 DC-13; P600; 0.55 A at 250 V

Rated thermal current: 10 A

Rated insulation voltage: 650 V

Minimum load: 3 V, 5 mA

Contact resistance: 50 mOhm max.

Insulation resistance: >100 MOhm at 500 V DC

Dielectric strength: 2500 V , 50 Hz for the duration of 1 minute

Operating temperature: illuminated components: -25°C to +55°C  
 other: -25°C to +70°C

Storage temperature: -40°C to +85°C

Operation / storage humidity: 45 to 85 % RH

Ingress protection: IP65 from front

Contamination class: 3

Vibration resistance: 10 - 55 Hz, 0.5 mm

Shock resistance: 10 G (Malfunction), 100 G (Destruction)

Mechanical life: 500k cycles

Electrical life: 500k cycles

Operation force (for ref. only): 25 N

Contact design: positive break for NC contacts

Number of contact blocks per unit: 5 max.

Referenced safety standards: UL508, CSA 22.2 No. 4, EN60947-5-1, EN60947-5-5

Lxxx	LED
L6R	red, 6V AC/DC
L12R	red, 12V AC/DC
L24R	red, 24V AC/DC
LA1R	red, 110V AC
LA2R	red, 220V AC
L6B	blue, 6V AC/DC
L12B	blue, 12V AC/DC
L24B	blue, 24V AC/DC
LA1B	blue, 110V AC
LA2B	blue, 220V AC
L6W	white, 6V AC/DC
L12W	white, 12V AC/DC
L24W	white, 24V AC/DC
LA1W	white, 110V AC
LA2W	white, 220V AC
L6Y	yellow, 6V AC/DC
L12Y	yellow, 12V AC/DC
L24Y	yellow, 24V AC/DC
LA1Y	yellow, 110V AC
LA2Y	yellow, 220V AC
L6G	green, 6V AC/DC
L12G	green, 12V AC/DC
L24G	green, 24V AC/DC
LA1G	green, 110V AC
LA2G	green, 220V AC

Compliance: RohS III (2015/863/EU)

Tolerances: 0-1: ±0.1mm 1-4: ±0.3mm 4-16: ±0.5mm 16-63: ±0.8mm	Date	Name	<b>ICE22RP2x-xx30-Lxxx</b>
	04/18	dr	
			Pushbutton, Latching, Round, Recessed
Panel design	10/23	dr	<b>knitter-switch</b>
Modifications	Date	Name	
			<b>30 40 48</b>
			Page
			2/2